

## APPENDIX E

### CASA CASILLAS – ARTIST SPACE ASBESTOS & LEAD-BASED PAINT SURVEY REPORT

**H.M. PITT LABS, INC.**  
**9590 Chesapeake Dr., Suite 5,**  
**San Diego, CA. 92123**  
Phone: (619) 474-8548 Fax: (858) 412-3305

## **Asbestos & Lead-Based Paint Survey**

### **Project location**

**50 North 4st Chula Vista CA. 91910**

**Prepared For:**  
**City of Chula Vista**  
**Stephen N Mosca**

### **Prepared By:**

**Richard Meyers**  
**AHERA Building Inspector #ABIR0915210004N29017**  
**CA Dept. of Public Health Lead Sampling Technician # LRC 00005584**

**Leland Pitt**  
**Certified Industry hygiene's # 4303**  
**Ken Trump**  
**CA Dept. of Public Health Certified Lead Inspector/Assessor**  
**LRC00002048**

**November 10, 2021**

**Lab # 178644**

# Table of Contents

---

## **Executive Summary**

Conclusion  
Recommendations

## **Introduction**

Purpose  
Asbestos and Lead Paint Survey  
Third Party Reliance

## **Methodology**

Visual Inspection  
Sample Procedures  
Laboratory Methods of Analysis  
Laboratory Quality Control Program

## **Conclusions**

General Summary  
Analytical Results Tables

## **Recommendations**

Asbestos  
Lead

## **Limitations**

Special Terms and Conditions  
Limitation and Exceptions of Assessment

## **Appendices**

Appendix I Project Photos  
Appendix II Positive Sample Location Drawings  
Appendix III Lab Certifications  
Appendix IV Inspector Certifications  
Appendix V Asbestos Results  
Appendix VI Lead Results

# Executive Summary

---

H.M. Pitt Labs, Inc. performed an Asbestos Containing Materials and Lead-Based Paint Survey for the purpose of the planned renovation of a building located at 50 North 4 St. Chula Vista Ca. 91910 on November 9, 2021. The survey for asbestos containing materials and lead base and lead containing paint was conducted by AHERA Building Inspector Richard Meyers ABIR15210004N29017, CPDH # LRC-00005584, working under the direct supervision of, Leland Pitt Certified Industry Hygienist# 4303 and Ken Trump CA DPH Certified Lead Inspector/Assessor #LRC 00002048.

The results and findings that are contained herein are representative of conditions that were present on November 9, 2021 Any conditions that have changed since these dates are not represented nor contained in this report.

## Conclusions

This Asbestos Containing Material (ACM) Survey did detect asbestos in the 9x9 and 12x12 floor tiles, Black Mastic, Sprayed on Acoustical Ceiling, Roof Penetration Mastic

This lead survey detected Lead Based Paint (LBP) was detected on the white exterior window frames. Lead-containing paint (LCP) was detected in the white exterior stucco walls and exterior block walls

For public and residential projects, LBP/LCP will require abatement by CA DPH Certified Lead trained supervisors and workers. For all other projects, LBP/LCP will require abatement by workers trained in the Cal OSHA Lead in Construction Standard (Title 8 CCR 1532.1) or the Fed OSHA Standard (29 CFR 1926.62). These materials are presented in the appropriate appendices. The amounts of materials are approximate and must be verified by the building owner and abatement contractor.

**Positive materials are presented in the appropriate appendices. The amounts of materials are approximate and must be verified by the building owner and abatement contractor. H. M. Pitt Labs, Inc. assumes no liability for any discrepancies in the amounts listed for any materials.**

## Recommendations

Any materials that have been determined to contain asbestos or lead paint that will be affected by renovation, remodeling and/or renovation activities, must be isolated and/or abated by a licensed abatement contractor.

Materials that are determined to contain asbestos or lead paint that are damaged must be abated/stabilized prior to renovation.

Materials that have been determined to contain lead-based paint that are determined to be "intact" by a California DPH Inspector/Assessor may be demolished in place and disposed of as construction debris once properly profiled for waste determination.

Materials found to contain <1% asbestos can be assumed to contain greater than 0.1% asbestos, or additional analysis using Transmission Electron Microscopy (TEM), or Point Counting Methodology or Gravimetric reduction may be used for a more definitive analysis of these materials. Materials found to contain >0.1% - 1% asbestos can be treated as construction waste; however, workers would still be required to comply with OSHA worker protection regulations (Title 8 CCR 1529, and 29 CFR 1926.1101).

Asbestos containing materials may be submitted to an accredited laboratory for Gravimetric Point Count analysis as a more definitive means of quantifying asbestos content for the purposes of renovation. This is in accordance with conversations with the United States Environmental Protection Agency Region IX office. This method of analysis is more definitive than PLM or Point Counting and may greatly reduce the amount of asbestos containing material waste that is generated.

All construction work where an employee may be occupationally exposed to lead in any amount must comply with OSHA standards Title 8 CCR 1532.1, and 29 CFR 1926.62.

Lead-Based Paints (LBP) are identified by State and Federal Standards as paint or other surface coatings that contain an amount of lead equal to or in excess of one milligram per square centimeter (1mg/cm<sup>2</sup>) or one half of one percent (0.5%) by weight or 5000 mg/kg.

Lead-Containing Paints (LCP) are identified by the Cal OSHA Lead in Construction Standard as lead greater than or equal to 600 ppm or 600 mg/kg. LCP has been identified as a potential hazard to workers during paint disturbance activities.

The City of San Diego's Renovation and Remodeling rule, Section 54.1005-1006, requires that renovators are required to use lead-safe work practices when disturbing lead paint that contains lead concentrations equal or greater than 1000 ppm or 0.5 mg/cm<sup>2</sup> on all pre-1979 buildings and structures.

Prior to any activities that may affect suspect materials found during the renovation that were unable to be sampled during these surveys, that additional sampling must be conducted to determine the content of suspect materials found at the subject sites.

This executive summary does not contain all the information that is contained in the full report. The report should be read in its entirety to obtain a more complete understanding of the information provided and to aid in any decisions made or actions taken based on this information.

# Introduction

---

## Purpose

The Asbestos and Lead-Based Paint Survey was performed to locate the presence of building materials commonly known to potentially contain asbestos or lead paint. Suspect and/or confirmed Asbestos Containing Material (ACM) and Lead-Based Paint (LBP) discussed below are assumed to be present on similar components within the structure.

The survey consisted of noting materials that are commonly known to potentially contain asbestos or lead paint. Materials sampled during the Asbestos and Lead-Based Paint Survey included friable and non-friable suspect asbestos containing materials and suspect lead-based painted components.

Friable asbestos containing materials are materials that can be crushed or pulverized by hand pressure when dry, or materials that can be rendered to a crumbled, pulverized, or powdered state when dry, by crushing, abrading, sanding, sawing, shot blasting, scarifying, or through renovation or renovation activities using mechanical means/methods.

The Environmental Protection Agency (EPA) National Emission Standards for Hazardous Air Pollutants (NESHAP) requires an inspection for asbestos be performed on facilities which are to undergo renovation or renovation work. Material found to contain asbestos may need to be removed prior to the start of such renovation/renovation work.

This Lead-Based Paint Survey was designed to comply with California Department of Public Health (CDPH) and Department of Housing and Urban Development (HUD) protocols for lead-based paint in public or residential buildings by confirmative sampling. It was designed to assess the presence of lead-based painted components that may be affected by the planned renovation of 50 North 4 St. Chula Vista Ca. 91910. The Lead-Based Paint Survey was performed by accredited California Department of Public Health Lead Sampling Technicians working under the direction of CDPH Certified Lead Inspector/Assessor. Paint chip samples collected were analyzed via Total Threshold Limit Concentration (TTLC) by an American Industrial Hygiene Association (AIHA) Environmental Lead Laboratory Accreditation Program (ELLAP) accredited laboratory.

The Asbestos Containing Materials Survey was performed by CA DOSH Certified Asbestos Building Inspectors trained under the guidelines of the Asbestos Hazard Emergency Response Act (AHERA) and under the supervision of a California Certified Asbestos Consultant. The collected samples were analyzed by Polarized Light Microscopy (PLM) by a National Voluntary Laboratory Accreditation Program (NVLAP) accredited laboratory.

### Asbestos and Lead-Based Paint Survey

The project consists of a survey for lead and asbestos associated with the property located at 50 North 4 St. Chula Vista Ca. 91910. The building that is being renovated has 6 rooms, lobby, 2 bathrooms, kitchen, janitor room and the roof.

Materials that could not be sampled and are assumed ACM include any in-wall materials that may be encountered during renovation phase and any unidentified piping in the underground of the existing building pads. Additional materials may also exist under the carpeting, in wall cavities, or other inaccessible areas. Should additional suspect materials be observed during renovation/renovation activities, those materials must be analyzed for asbestos?

The building was also surveyed for lead containing building components. The survey was conducted using a modified HUD, EPA, and California DPH sampling strategy for the purpose of renovation. Representative samples of suspect building components were collected and analyzed for lead.

The objective of this Asbestos Containing Material and Lead-Based Paint Survey was to identify materials for sampling and analysis to determine the presence or absence of asbestos containing materials (ACM) or lead containing building components that will be disturbed in the planned renovation of the above referenced property. The following services were provided for the survey:

1. Review of information provided by the client and/or Owner regarding the dates of construction, materials used in construction, as well as location of suspect materials in the portable buildings.
2. Visual location of building materials which are commonly known to potentially contain asbestos or lead paint or coating;
3. Collection of building material samples identified as suspect ACM;
4. Collection of samples of building components identified as suspect lead-based paint or coating
5. Preparation of this report that relates the findings of the ACM and LBP Surveys and also presents H.M. Pitt Labs, Inc.'s conclusions and recommendations.

### Third Party Reliance

Third party reliance letters may be issued upon request and upon the payment of the, then current fee for such letters. All third parties relying on H.M. Pitt Labs, Inc.'s reports, by such reliance, agreed to be bound by H.M. Pitt Labs, Inc.'s General Terms and Conditions and limitations. No reliance by any party is permitted without such agreement, regardless of content of the reliance letter itself.

## Methodology

---

### Visual Inspection

An initial walkthrough of the structure was conducted to determine the presence of suspect materials in the areas that will be disturbed during the proposed renovation. Materials that were found in areas of similar ages, as well as similar in color and general appearance were grouped into homogenous sampling areas. Also identified were areas and/or building components that were coated with suspect lead-based paint or surface coatings. Original "as built" drawings were not made available for the survey.

### Sample Procedures

Selected samples were collected from materials identified as suspect Asbestos Containing Material or Lead-Based Paint and selected surfaces were analyzed by bulk sampling the material. When sampling for asbestos containing materials, materials were misted with an amended water solution to keep the materials moist during the sampling efforts. Sampled suspect asbestos containing materials were plotted on a floor plan, placed in sealable industrial strength polyethylene bags, given a unique identifier number which was placed on the bag and then on the chain of custody sheet. Samples were then transported to H.M. Pitt Labs, Inc., a NVLAP, ELAP and ELLAP accredited laboratory.

### Laboratory Methods of Analysis

The suspect asbestos containing material bulk samples were analyzed by Polarized Light Microscopy (PLM) with dispersion staining in accordance with EPA Interim Method (40 CFR 763, subpart F, Appendix A) for the determination of asbestos in bulk samples. This is a standard method of analysis in optical mineralogy and the currently accepted method for the determination of asbestos in bulk samples. A suspect material is immersed in a solution of known refractive index and subjected to illumination by polarized light. The characteristic color displays which enable mineral identification. It should be noted that some ACM's might not be accurately identified and/or quantified by PLM. As an example, the original fabrication of vinyl floor tiles routinely involved milling of asbestos fibers to extremely small sizes. As a result, these fibers may go undetected under the standard polarized light microscopy method. Transmission Electron Microscopy (TEM), Point Counting or Gravimetric Analysis may be necessary for a more definitive analysis of these materials.



The suspect lead-based paint samples were analyzed by Flame Atomic Absorption (FAA) in accordance with EPA Method 3050-M, 7420-M for the determination of lead. Samples were analyzed by H.M. Pitt Labs, Inc. which is an ELLAP/ELAP Accredited laboratory for the analysis of lead.

#### Laboratory Quality Control Program

H.M. Pitt Labs, Inc. is a licensed laboratory which maintains an in-house quality control program, NVLAP accreditation, an Environmental Laboratory Accreditation Program (ELAP) accreditation, and an Environmental Lead Laboratory Accreditation Program (ELLAP) accreditation. These programs involve blind reanalysis of ten percent of all samples, precision and accuracy controls, and use of standard bulk reference materials.

## Conclusions

---

#### General Summary

This building 50 North 4 St. Chula Vista Ca. 91910. It is unknown if and when these buildings have had any renovation since it has been built. There was no attic or crawl space.

This Asbestos Containing Material (ACM) Survey did detect asbestos in the 9x9 and 12x12 floor tiles, Black Mastic, Sprayed on Acoustical Ceiling, Roof Penetration Mastic. A material is considered to be an asbestos containing material (ACM) if at least one sample collected from the area shows asbestos present in an amount greater than one percent (>1%) by weight.

Lead Based Paint (LBP) was detected on the white exterior window frame on building. Lead-containing paint (LCP) was detected in the white exterior stucco walls and exterior block walls

Lead-based paint (as defined by the California Department of Public Health, Title 17) means paint or other surface coatings that contain an amount of lead equal to, or in excess of one milligram per square centimeter ( $1.0 \text{ mg/cm}^2$ ), one-half of one percent by weight (0.5%) or 5000 mg/kg.

Lead-Containing paints are regulated by Federal, State and Local agencies. California Occupational Safety and Health Administration (CAL/OSHA) under worker protection guidelines requires all construction work where an employee may be occupationally exposed to lead in any amount must comply with the Lead in Construction Safety Order, Title 8 CCR Section 1532.1.

#### Analytical Results Tables

This Asbestos and Lead-Based Paint Survey did detect asbestos. Lead-based and lead containing paints/materials/building components were detected.

Positive results of the Asbestos Containing Materials (>1.0%), Asbestos Containing Construction Materials (0.1%-1%) and Lead-Based Paints (1.0 mg/cm<sup>2</sup>, 0.5% wt., or 5,000 mg/kg) or Lead-Containing paints (0.06% or 600 mg/kg) are presented in the table below.

The quantities of each material are approximations only. It is the responsibility of the potential bidders for the project to verify and confirm actual quantities in the field. Please refer to the appropriate Appendix for a more detailed description of the microscopic analysis of these samples.

### Asbestos Containing Materials (>1%)

Sample	Sample Location	Sample Description	% & Type of Asbestos	Friability	Approx. Amount
18,19,20	Rooms 1,2,5	Sprayed on Acoustical Ceiling	< 1% Chrysotile	Friable	800sf
38,39	Air Handler, Chimney	Black Roof Penetration	7&8% chrysotile	Non Friable	10 lf
41-46	Janitor Room	Red 9x9 Floor Tile, Black Mastic	3 to 9% chrysotile	Non Friable	10sf
53,54,58	Main Room, Room 2 under Gray Carpet	12x12 Floor Tile Black Mastic	5to 7 % chrysotile	Non Friable	1200sf
59,60,61	Lobby, Room 5 under Blue Carpet	12x12 Floor Tile Black Mastic	7to 9 % chrysotile	Non Friable	900sf

### Asbestos Containing Construction Materials (>0.1% wt.)

Sample #	Sample Location	Sample Description	% & Type of Asbestos	Friability	Approx. Amount
	No asbestos was detected				

All samples were analyzed by EMSL Analytical San Diego. Please see the end of the typed data for their current NVLAP and ELAP certification number.

### Lead-Based Paints 5000 mg/kg, 1.0 mg/cm<sup>2</sup>, 0.5% wt. and above

Sample	Sample Location	Sample Description	mg/kg lead	Condition	Approx. Amount
10	Exterior Window Frames	White Paint	10000 mg/kg	Intact	350sf

### Lead-Containing Paints $\geq 0.06\%$ wt. (600 mg/kg)

Sample	Sample Location	Sample Description	mg/kg lead	Condition	Approx. Amount
09	Interior Window Frames Front Lobby	White Paint on Window Frames	2870mg/kg	Intact	125sf
11	Exterior Stucco Wall	White Paint on Stucco Wall	1950 mg/kg	Intact	1500sf
14	Exterior Stucco Wall on Roof	White Paint on Stucco Wall	2450 mg/kg	Intact	420sf

## Recommendations

Prior to any activities that may affect suspect materials found during construction work that were not sampled during this Asbestos and Lead-Based Paint Survey, additional sampling must be conducted to determine the content of the suspect materials found at the subject sites.

### Asbestos

Any material that has been determined to contain asbestos at the site that will be affected by renovation must be abated by AHERA Certified Asbestos Contractor/Supervisor and/or AHERA Certified Asbestos Worker personnel. The contractor must be registered with CAL/DOSH as an asbestos contractor and the California State Contractors Licensing Board (CSLB) as an asbestos abatement contractor.

All Asbestos Containing Materials ( $>1\%$ ) must be characterized for disposal in accordance with Federal, State and Local requirements. All Asbestos Containing Construction Materials (ACCM) ( $>0.1\%$  wt. &  $\leq 1.0\%$  wt.) can be disposed of as regular construction debris after being removed as ACM. The owner is responsible for obtaining disposal waste characterization requirements for the project.

### Lead

Lead-Based Paints or other surface coatings that contain an amount of lead equal to or greater than one milligram per square centimeter ( $1.0 \text{ mg/cm}^2$ ), or one half of one percent ( $0.5\%$  wt.) or 5000 mg/kg must be rendered intact or removed by properly trained and certified personnel. Lead containing waste must be profiled for proper disposal.

Lead-Containing Paints (LCP) are identified by the Cal OSHA Lead in Construction Standard as lead greater than or equal to 600 ppm or 600 mg/kg. LCP has been identified as a potential hazard to workers during paint disturbance activities.

In the event that buildings materials found to contain hazardous amounts of lead are to be disturbed, it is required that those materials be abated or stabilized by lead trained workers prior to renovation or renovation.

The City of San Diego's Renovation and Remodeling rule, Section 54.1005-1006, require that renovators are required to use lead-safe work practices when disturbing lead paint that contains lead concentrations equal or greater than 1000 ppm or 0.5 mg/cm<sup>2</sup> on all pre-1979 buildings and structures.

Any component identified as containing lead-based paint or lead-containing paint must be stabilized prior to renovation and characterized for waste disposal. Materials must be stabilized by personnel trained in lead abatement. All construction work where an employee may be occupationally exposed to lead in any amount must comply with Title 8 CCR Section 1532.1. Lead containing waste must be profiled for proper disposal.

## Limitations

---

### Special Terms and Conditions

H.M. Pitt Labs, Inc. conducted an Asbestos Containing Material and Lead-Based Paint Survey in general accordance to a written contract with City of Chula Vista, located at 1800 Maxwell Rd. Chula Vista CA. 91910. This survey does not include sampling of soil, water, underground materials and/or components, or any debris at any of the sites for environmental testing. This report is intended for the use of La Mesa Spring Valley School District and its immediate assignees. The contents should not be relied upon by any party other than the aforementioned without the express written consent of H.M. Pitt Labs, Inc.

### Limitations and Exceptions of Assessment

The findings, conclusions and recommendations made in this report are based on the information that was made available to H.M. Pitt Labs, Inc., from City of Chula Vista; the information is relevant to the dates of our site work and should not be relied upon to represent conditions at any later date. The opinions and conclusions expressed herein are based on the information obtained during our assessment and on our experience and current standards of technical practice. H.M. Pitt Labs, Inc. makes no other warranties, either express or implied, concerning the completeness of the data furnished to us. H.M. Pitt Labs, Inc. cannot be responsible for conditions or consequences arising from relevant facts that were concealed, withheld, or not fully disclosed at the time of our assessment was undertaken. H.M. Pitt Labs, Inc. is neither responsible nor liable for work, testing or recommendations performed or provided by others. This Asbestos Containing Materials and Lead-Based Paint Survey is not and should not be construed as a warranty or guarantee about the presence or absence of environmental hazards or contaminants that

may affect the subject sites. Facts, conditions, and acceptable risk factors change with time; accordingly, this report should be viewed within this context.

Prepared by:



Richard Meyers  
AHERA Building Inspector ASBBI00381  
CA DPH Certified Lead Sampling Technician # LRC- 00005584

Leland Pitt  
California Certified Industrial Hygienist# 4303  
Ken Trump  
CA DPH Certified Lead Inspector/Assessor # LRC 0000248

Lab Order #178644

## Appendix I

### Project Photos



PB- Sample 09 White Lead Containing Paint on Interior Window Frames



PB- Sample 10 White Lead Base Paint on Exterior Window Frames  
PB Sample 11 White Lead Containing Paint on Exterior Stucco Walls



**PB Sample 14 White Lead Containing Paint on Exterior Stucco Walls on the Roof**



**AB Samples 18-20 White Sprayed on Acoustical Ceiling**



**AB Samples 41-46 Red 9x9 Floor Tiles, Black Mastic in Janitor Room**



**Ab Samples 50,51 Black Mastic under White 12x12 Floor Tile**





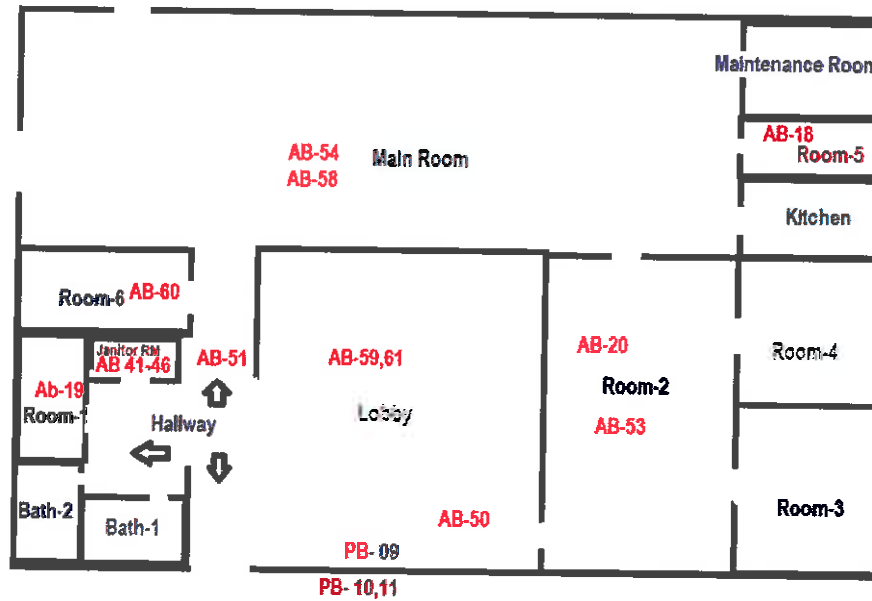
**AB Samples 53,54,58 12x12 Floor Tiles, Black Mastic under Blue Carpet**



**AB Samples 59,60,61 12x12 Floor Tiles, Black Mastic under Gray Carpet**

## Appendix II

### Positive Sample Location Drawing



Positive Location Map

AB - Asbestos

PB - Lead

PB - 14 on Roof

AB 38,39 on Roof

# Appendix III

## Lab Certifications

United States Department of Commerce  
National Institute of Standards and Technology



### Certificate of Accreditation to ISO/IEC 17025:2017

NVLAP LAB CODE: 200591-0

**H.M. Pitt Labs Inc.**  
San Diego, CA

*is accredited by the National Voluntary Laboratory Accreditation Program for specific services,  
listed on the Scope of Accreditation, for:*

**Asbestos Fiber Analysis**

*This laboratory is accredited in accordance with the recognized International Standard ISO/IEC 17025:2017.  
This accreditation demonstrates technical competence for a defined scope and the operation of a laboratory quality  
management system (refer to joint ISO-ILAC-IAF Communiqué dated January 2009).*

2020-10-01 through 2021-09-30  
*Effective Dates*



*[Signature]*  
For the National Voluntary Laboratory Accreditation Program



**AIHA Laboratory Accreditation Programs, LLC**

*acknowledges that*

**H.M. Pitt Labs, Inc.**  
9590 Chesapeake Drive, Suite 5, San Diego, CA 92123-1346  
Laboratory ID: LAP-101678

along with all personnel from which key activities are performed, as listed above, has fulfilled the requirements of the AIHA Laboratory Accreditation Programs (AIHA-LAP), LLC accreditation to the ISO/IEC 17025:2017 International standard, General Requirements for the Competence of Testing and Calibration Laboratories in the following:

**LABORATORY ACCREDITATION PROGRAMS**

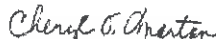
<input type="checkbox"/>	<b>INDUSTRIAL HYGIENE</b>	Accreditation Expires:
<input checked="" type="checkbox"/>	<b>ENVIRONMENTAL LEAD</b>	Accreditation Expires: March 01, 2022
<input type="checkbox"/>	<b>ENVIRONMENTAL MICROBIOLOGY</b>	Accreditation Expires:
<input type="checkbox"/>	<b>FOOD</b>	Accreditation Expires:
<input type="checkbox"/>	<b>UNIQUE SCOPES</b>	Accreditation Expires:

Specific Field(s) of Testing (FoTy) Method(s) within each Accreditation Program for which the above named laboratory maintains accreditation is outlined on the attached Scope of Accreditation. Continued accreditation is contingent upon successful on-going compliance with ISO/IEC 17025:2017 and AIHA-LAP, LLC requirements. This certificate is not valid without the attached Scope of Accreditation. Please review the AIHA-LAP, LLC website ([www.aihaaccredlabs.org](http://www.aihaaccredlabs.org)) for the most current Scope.



Michael Brea  
Chairperson, Analytical Accreditation Board

Revision 18: 03/07/2020



Cheryl O. Morton  
Managing Director, AIHA Laboratory Accreditation Programs, LLC

Date Issued: 03/31/2020

# Appendix IV

## Inspector Certifications

# Certificate Of Completion

## Asbestos Building Inspector Refresher Course

DOSH #:CA-015-06

**Richard Meyers**

ABIR0915210004N29017

**Online Training**

---

Principal Instructor

9/19/2021 Course Start Date

9/19/2021 Course End Date

Michael W. Horner  
Training Director

9/19/2021 Exam Date

9/19/2022 Expiration Date

This course satisfies the education requirements for Asbestos accreditation under the Toxic Substances Control Act, Title II. This course has been approved by the Department of Industrial Relations, Division of Occupational Safety and Health of the State of California

**NATEC International, Inc.**

National Association of Training and Environmental Consulting

1100 Technology Circle - Suite A, Anaheim, CA 92805 • www.natecintl.com • 800-969-3228

<p><b>Important Industry Contacts</b></p> <p>CAL-OSHA: Ph: (916) 574-2993 (916) 483-9572 Fax Notification Web: www.dfr.ca.gov or calosha.com</p> <p>CDPH/CLPPB: Ph: (510) 626-5600 Web: www.cdph.ca.gov/programs/CLPPB</p> <p>SCADHD: Ph: (909) 396-3759 Fax: (909) 396-3342</p> <p>BAAQMD: Ph: (415) 749-4762</p>	<p><b>NATEC International, Inc.</b></p> <p>National Association of Training and Environmental Consulting</p> <p>Anaheim, CA • Oakland, CA • Fresno, CA • Sacramento, CA</p> <hr/> <p>P.O. Box 25205 Anaheim, CA 92825-5205</p> <p>(714) 678-2750, (800) 969-3228, Fax (714) 678-2757</p> <p>www.natecintl.com</p>	<p><b>NATEC International, Inc.</b></p> <p>National Association of Training and Environmental Consulting</p> <p><small>Please, Card is not suitable substitute for certificate and is not accepted as evidence of certification</small></p> <p style="text-align: center;">This Card Acknowledges That <b>Richard Meyers</b></p> <p style="text-align: center;">Has Completed Certification For Asbestos Building Inspector Refresher Course</p> <p style="text-align: center;">Expiration: 9/19/2022</p> <p>Training Date: 9/19/2021 Certificate No: ABIR0915210004N29017</p> <p style="text-align: right;">Michael W. Horner Training Director</p>
--	---	--

**STATE OF CALIFORNIA**

**DEPARTMENT OF PUBLIC HEALTH**

## LEAD-RELATED CONSTRUCTION CERTIFICATE

<p><b>INDIVIDUAL:</b></p> <div style="text-align: center;">   <b>Richard Meyers</b> </div>	<p><b>CERTIFICATE TYPE:</b></p> <p>Lead Sampling Technician</p>	<p><b>NUMBER:</b></p> <p>LRC-00005584</p>	<p><b>EXPIRATION DATE:</b></p> <p>2/18/2021</p>
--	---	---	---

Disclaimer: This document alone should not be relied upon to confirm certification status. Compare the individual's photo and name to another valid form of government issued photo identification. Verify the individual's certification status by searching for Lead-Related Construction Professionals at [www.cdph.ca.gov/programs/clppb](http://www.cdph.ca.gov/programs/clppb) or calling (800) 597-LEAD.

**Appendix V**  
**Asbestos Results**



# EMSL Analytical, Inc.

100 Green Park Industrial Court Saint Louis, MO 63123

Tel/Fax: (314) 577-0150 / (314) 776-3313

http://www.EMSL.com / saintlouislab@emsl.com

EMSL Order: 392111563

Customer ID: 32SOUT49

Customer PO:

Project ID:

## Test Report: Asbestos Analysis of Bulk Materials via EPA 600/R-93/116 Method using Polarized Light Microscopy

Sample	Description	Appearance	% Fibrous	% Non-Fibrous	Asbestos % Type
No black layer present.					
53 392111563-0053 No red layer present.	Floor Tile 12x12/Red/Under Gray Carpet Room-2	Various Non-Fibrous Homogeneous		94% Non-fibrous (Other)	6% Chrysotile
54 392111563-0054 No red layer present.	Floor Tile 12x12/Red/Under Gray Carpet Main Room	Various Non-Fibrous Homogeneous		93% Non-fibrous (Other)	7% Chrysotile
55 392111563-0055 No red layer present.	Floor Tile 12x12/Red/Under Gray Carpet Main Room	Various Non-Fibrous Heterogeneous	3% Synthetic	97% Non-fibrous (Other)	None Detected
56 392111563-0056	Floor Tile Mastic/Black/Under Gray Carpet Room-2	Black Non-Fibrous Homogeneous		100% Non-fibrous (Other)	None Detected
57 392111563-0057	Floor Tile Mastic/Black/Under Gray Carpet Main Room	Black Non-Fibrous Homogeneous		100% Non-fibrous (Other)	None Detected
58 392111563-0058	Floor Tile Mastic/Black/Under Gray Carpet Main Room	Black Non-Fibrous Homogeneous		95% Non-fibrous (Other)	5% Chrysotile
59 392111563-0059 No red layer present.	Floor Tile 12x12/Red/Under Blue Carpet Lobby	Various Non-Fibrous Homogeneous		92% Non-fibrous (Other)	8% Chrysotile
60 392111563-0060 No red layer present.	Floor Tile 12x12/Red/Under Blue Carpet Room-5	Various Non-Fibrous Homogeneous		93% Non-fibrous (Other)	7% Chrysotile
61 392111563-0061	Floor Tile Mastic/Black/Under Blue Carpet Lobby	Black Non-Fibrous Homogeneous		91% Non-fibrous (Other)	9% Chrysotile
62 392111563-0062	Floor Tile Mastic/Black/Under Blue Carpet Room-5	Black Non-Fibrous Homogeneous		100% Non-fibrous (Other)	None Detected

Analyst(s)

Sue Ferrario (58)

Sarah Kuper (23)

Jeff Siria, Laboratory Manager  
or Other Approved Signatory

EMSL maintains liability limited to cost of analysis. Interpretation and use of test results are the responsibility of the client. This report relates only to the samples reported above, and may not be reproduced, except in full, without written approval by EMSL. EMSL bears no responsibility for sample collection activities or analytical method limitations. The report reflects the samples as received. Results are generated from the field sampling data (sampling volumes and areas, locations, etc.) provided by the client on the Chain of Custody. Samples are within quality control criteria and met method specifications unless otherwise noted. The above analyses were performed in general compliance with Appendix E to Subpart E of 40 CFR (previously EPA 600/M4-82-020 "Interim Method") but augmented with procedures outlined in the 1993 ("final") version of the method. This report must not be used by the client to claim product certification, approval, or endorsement by NVLAP, NIST or any agency of the federal government. Non-friable organically bound materials present a problem matrix and therefore EMSL recommends gravimetric reduction prior to analysis. Unless requested by the client, building materials manufactured with multiple layers (i.e. linoleum, wallboard, etc.) are reported as a single sample. Estimation of uncertainty is available on request.

Samples analyzed by EMSL Analytical, Inc. Saint Louis, MO NVLAP Lab Code 200742-0

Initial report from: 11/16/2021 17:39:59

**EMSL Analytical, Inc.**

100 Green Park Industrial Court Saint Louis, MO 63123

Tel/Fax: (314) 577-0150 / (314) 776-3313

<http://www.EMSL.com / saintlouislab@emsl.com>

EMSL Order: 392111563

Customer ID: 32SOUT49

Customer PO:

Project ID:

Attention: Lee Pitt

H.M. Pitt Labs, Inc.

9590 Chesapeake Dr, Ste 5

San Diego, CA 92123

Phone: (619) 474-8548

Fax: (619) 474-6128

Received Date: 11/09/2021 11:45 AM

Analysis Date: 11/11/2021

Collected Date:

Project: 178644

**Test Report: Asbestos Analysis of Bulk Materials via EPA 600/R-93/116 Method using Polarized Light Microscopy**

Sample	Description	Appearance	Non-Asbestos		Asbestos % Type
			% Fibrous	% Non-Fibrous	
1-Plaster 392111563-0001	Interior Wall Plaster/Gray/Hallway	White Non-Fibrous Homogeneous		100% Non-fibrous (Other)	None Detected
1-Plaster 392111563-0001A	Interior Wall Plaster/Gray/Hallway	Gray Non-Fibrous Homogeneous		11% Quartz 89% Non-fibrous (Other)	None Detected
2-Plaster 392111563-0002	Interior Wall Plaster/Gray/Kitchen	White Non-Fibrous Homogeneous		100% Non-fibrous (Other)	None Detected
2-Plaster 392111563-0002A	Interior Wall Plaster/Gray/Kitchen	Gray Non-Fibrous Homogeneous		12% Quartz 88% Non-fibrous (Other)	None Detected
3-Plaster 392111563-0003	Interior Wall Plaster/Gray/Main Room	Yellow Non-Fibrous Homogeneous		28% Quartz 72% Non-fibrous (Other)	None Detected
3-Plaster 392111563-0003A	Interior Wall Plaster/Gray/Main Room	Gray Non-Fibrous Homogeneous		13% Quartz 87% Non-fibrous (Other)	None Detected
4-Plaster 392111563-0004	Interior Wall Plaster/Gray/Room-2	Yellow Non-Fibrous Homogeneous		29% Quartz 71% Non-fibrous (Other)	None Detected
4-Plaster 392111563-0004A	Interior Wall Plaster/Gray/Room-2	Gray Non-Fibrous Homogeneous		14% Quartz 86% Non-fibrous (Other)	None Detected
5-Plaster 392111563-0005	Interior Wall Plaster/Gray/Room-5	Yellow Non-Fibrous Homogeneous		29% Quartz 71% Non-fibrous (Other)	None Detected
5-Plaster 392111563-0005A	Interior Wall Plaster/Gray/Room-5	Gray Non-Fibrous Homogeneous		15% Quartz 85% Non-fibrous (Other)	None Detected
6 392111563-0006	Vinyl Flooring/White/Kitchen	White Non-Fibrous Heterogeneous	6% Cellulose 6% Glass	88% Non-fibrous (Other)	None Detected
7 392111563-0007	Vinyl Flooring/White/Bathroom 1	White Non-Fibrous Heterogeneous	7% Cellulose 7% Glass	86% Non-fibrous (Other)	None Detected
8 392111563-0008	Vinyl Flooring/White/Bathroom 2	White Non-Fibrous Heterogeneous	12% Cellulose 8% Glass	80% Non-fibrous (Other)	None Detected
9 392111563-0009	Ceiling Tile 2x4/White/Bathroom-1	White Fibrous Homogeneous	28% Cellulose 37% Min. Wool	28% Perlite 7% Non-fibrous (Other)	None Detected
10 392111563-0010	Ceiling Tile 2x4/White/Bathroom-1	White Fibrous Homogeneous	29% Cellulose 38% Min. Wool	29% Perlite 4% Non-fibrous (Other)	None Detected
11 392111563-0011	Ceiling Tile 2x4/White/Hallway	White Fibrous Homogeneous	30% Cellulose 41% Min. Wool	19% Perlite 10% Non-fibrous (Other)	None Detected

Initial report from: 11/16/2021 17:39:59



**EMSL Analytical, Inc.**

100 Green Park Industrial Court Saint Louis, MO 63123

Tel/Fax: (314) 577-0150 / (314) 776-3313

<http://www.EMSL.com> / [saintlouislab@emsl.com](mailto:saintlouislab@emsl.com)

EMSL Order: 392111563

Customer ID: 32SOUT49

Customer PO:

Project ID:

**Test Report: Asbestos Analysis of Bulk Materials via EPA 600/R-93/116 Method using Polarized Light Microscopy**

Sample	Description	Appearance	Non-Asbestos		Asbestos % Type
			% Fibrous	% Non-Fibrous	
12 392111563-0012	Ceiling Tile 12x12/White/Lobby	White Fibrous Homogeneous	96% Cellulose	4% Non-fibrous (Other)	None Detected
13 392111563-0013	Ceiling Tile 12x12/White/Lobby	White Fibrous Homogeneous	97% Cellulose	3% Non-fibrous (Other)	None Detected
14 392111563-0014	Ceiling Tile 12x12/White/Hallway	White Fibrous Homogeneous	97% Cellulose	3% Non-fibrous (Other)	None Detected
15 392111563-0015	Hockey Pucks/Gray/Lobby	Gray Non-Fibrous Homogeneous		100% Non-fibrous (Other)	None Detected
16 392111563-0016	Hockey Pucks/Gray/Lobby	Gray Non-Fibrous Homogeneous		100% Non-fibrous (Other)	None Detected
17 392111563-0017	Hockey Pucks/Gray/Hallway	Gray Non-Fibrous Homogeneous		100% Non-fibrous (Other)	None Detected
18 392111563-0018	SOAC/White/Room-5	White Non-Fibrous Homogeneous		100% Non-fibrous (Other)	<1% Chrysotile
19 392111563-0019	SOAC/White/Room-1	White Non-Fibrous Homogeneous		100% Non-fibrous (Other)	<1% Chrysotile
20 392111563-0020	SOAC/White/Room-2	White Non-Fibrous Homogeneous		100% Non-fibrous (Other)	<1% Chrysotile
21 392111563-0021	Cove Base Mastic/Tan/Lobby	Tan Non-Fibrous Homogeneous		100% Non-fibrous (Other)	None Detected
22 392111563-0022	Cove Base Mastic/Tan/Main Room	Tan Non-Fibrous Homogeneous		100% Non-fibrous (Other)	None Detected
23 392111563-0023	Cove Base Mastic/Tan/Room-3	Tan Non-Fibrous Homogeneous		100% Non-fibrous (Other)	None Detected
24 392111563-0024	Carpet Glue/Blue Carpet/Lobby	Tan Non-Fibrous Homogeneous		100% Non-fibrous (Other)	None Detected
25 392111563-0025	Carpet Glue/Blue Carpet/Room-1	Tan Non-Fibrous Homogeneous		100% Non-fibrous (Other)	None Detected
Other layers present analyzed with other samples in the order.					
26 392111563-0026	Carpet Glue/Blue Carpet/Room-6	Tan Non-Fibrous Homogeneous		100% Non-fibrous (Other)	None Detected
27 392111563-0027	Carpet Glue/Gray Carpet/Room-2	Tan Non-Fibrous Homogeneous		100% Non-fibrous (Other)	None Detected
28 392111563-0028	Carpet Glue/Gray Carpet/Room-2	Tan Non-Fibrous Homogeneous		100% Non-fibrous (Other)	None Detected
29 392111563-0029	Carpet Glue/Gray Carpet/Main Room	Tan Non-Fibrous Homogeneous		100% Non-fibrous (Other)	None Detected

Initial report from: 11/16/2021 17:39:59

**EMSL Analytical, Inc.**

100 Green Park Industrial Court Saint Louis, MO 63123

Tel/Fax: (314) 577-0150 / (314) 776-3313

<http://www.EMSL.com/saintlouislab@emsl.com>

EMSL Order: 392111563

Customer ID: 32SOUT49

Customer PO:

Project ID:

**Test Report: Asbestos Analysis of Bulk Materials via EPA 600/R-93/116 Method using Polarized Light Microscopy**

Sample	Description	Appearance	Non-Asbestos		Asbestos % Type
			% Fibrous	% Non-Fibrous	
30-Stucco 392111563-0030	Exterior Stucco/Gray/North	Peach Non-Fibrous Homogeneous		13% Quartz 87% Non-fibrous (Other)	None Detected
30-Stucco 392111563-0030A	Exterior Stucco/Gray/North	Gray Non-Fibrous Homogeneous		100% Non-fibrous (Other)	None Detected
31-Stucco 392111563-0031	Exterior Stucco/Gray/North Wall	Peach Non-Fibrous Homogeneous		14% Quartz 86% Non-fibrous (Other)	None Detected
31-Stucco 392111563-0031A	Exterior Stucco/Gray/North Wall	Gray Non-Fibrous Homogeneous		100% Non-fibrous (Other)	None Detected
32-Stucco 392111563-0032	Exterior Stucco/Gray/South	Peach Non-Fibrous Homogeneous		11% Quartz 89% Non-fibrous (Other)	None Detected
32-Stucco 392111563-0032A	Exterior Stucco/Gray/South	Gray Non-Fibrous Homogeneous		100% Non-fibrous (Other)	None Detected
33-Stucco 392111563-0033	Exterior Stucco/Gray/East	Peach Non-Fibrous Homogeneous		12% Quartz 88% Non-fibrous (Other)	None Detected
33-Stucco 392111563-0033A	Exterior Stucco/Gray/East	Gray Non-Fibrous Homogeneous		100% Non-fibrous (Other)	None Detected
34-Stucco 392111563-0034	Exterior Stucco/Gray/West	Peach Non-Fibrous Homogeneous		18% Quartz 84% Non-fibrous (Other)	None Detected
34-Stucco 392111563-0034A	Exterior Stucco/Gray/West	Gray Non-Fibrous Homogeneous		100% Non-fibrous (Other)	None Detected
35-Roofing 392111563-0035	Rolled Roofing/Black/North	Various Non-Fibrous Heterogeneous	28% Cellulose	72% Non-fibrous (Other)	None Detected
35-Tar Paper 392111563-0035A	Rolled Roofing/Black/North	Black Non-Fibrous Homogeneous	48% Cellulose	52% Non-fibrous (Other)	None Detected
35-Insulation 392111563-0035B	Rolled Roofing/Black/North	Brown Fibrous Homogeneous	100% Cellulose		None Detected
36-Roofing 392111563-0036	Rolled Roofing/Black/South	Various Non-Fibrous Heterogeneous	29% Cellulose	71% Non-fibrous (Other)	None Detected
36-Tar Paper 392111563-0036A	Rolled Roofing/Black/South	Black Non-Fibrous Homogeneous	49% Cellulose	51% Non-fibrous (Other)	None Detected
36-Insulation 392111563-0036B	Rolled Roofing/Black/South	Brown Fibrous Homogeneous	100% Cellulose		None Detected
37-Roofing 392111563-0037	Rolled Roofing/Black/West	Various Non-Fibrous Heterogeneous	25% Synthetic	75% Non-fibrous (Other)	None Detected
37-Tar Paper 392111563-0037A	Rolled Roofing/Black/West	Black Non-Fibrous Homogeneous	49% Cellulose	51% Non-fibrous (Other)	None Detected
38-Roof 392111563-0038	Roof Penetration/Black/Air Handler	Silver Non-Fibrous Homogeneous		100% Non-fibrous (Other)	None Detected

Initial report from: 11/16/2021 17:39:59

**EMSL Analytical, Inc.**

100 Green Park Industrial Court Saint Louis, MO 63123

Tel/Fax: (314) 577-0150 / (314) 776-3313

<http://www.EMSL.com / saintlouislab@emsl.com>

EMSL Order: 392111563

Customer ID: 32SOUT49

Customer PO:

Project ID:

**Test Report: Asbestos Analysis of Bulk Materials via EPA 600/R-93/116 Method using Polarized Light Microscopy**

Sample	Description	Appearance	Non-Asbestos		Asbestos
			% Fibrous	% Non-Fibrous	% Type
38-Roof 392111563-0038A	Roof Penetration/Black/Air Handler	Brown Non-Fibrous Homogeneous	6% Cellulose	94% Non-fibrous (Other)	None Detected
38-Roof 392111563-0038B	Roof Penetration/Black/Air Handler	Black Non-Fibrous Homogeneous		94% Non-fibrous (Other)	6% Chrysotile
39-Roof 392111563-0039	Roof Penetration/Black/Chimney	Silver Non-Fibrous Homogeneous		100% Non-fibrous (Other)	None Detected
39-Roof 392111563-0038A	Roof Penetration/Black/Chimney	Brown Non-Fibrous Homogeneous	7% Cellulose	93% Non-fibrous (Other)	None Detected
39-Roof 392111563-0039B	Roof Penetration/Black/Chimney	Black Non-Fibrous Homogeneous		93% Non-fibrous (Other)	7% Chrysotile
40 392111563-0040	Roof Penetration/Black/Roof and Vent	Black Non-Fibrous Homogeneous	12% Cellulose	88% Non-fibrous (Other)	None Detected
41 392111563-0041 No red layer present.	Floor Tile 9x9/Red/Janitor Room	Various Non-Fibrous Homogeneous		92% Non-fibrous (Other)	8% Chrysotile
42 392111563-0042 No red layer present.	Floor Tile 9x9/Red/Janitor Room	Various Non-Fibrous Homogeneous		91% Non-fibrous (Other)	9% Chrysotile
43 392111563-0043 No red layer present.	Floor Tile 9x9/Red/Janitor Room	Various Non-Fibrous Homogeneous		97% Non-fibrous (Other)	3% Chrysotile
44 392111563-0044	Floor Tile Mastic/Black/Janitor Room	Black Non-Fibrous Homogeneous		94% Non-fibrous (Other)	6% Chrysotile
45 392111563-0045	Floor Tile Mastic/Black/Janitor Room	Black Non-Fibrous Homogeneous		93% Non-fibrous (Other)	7% Chrysotile
46 392111563-0046	Floor Tile Mastic/Black/Janitor Room	Black Non-Fibrous Homogeneous		94% Non-fibrous (Other)	6% Chrysotile
47 392111563-0047	Floor Tile 12x12/White/Lobby	White Non-Fibrous Homogeneous		100% Non-fibrous (Other)	None Detected
48 392111563-0048	Floor Tile 12x12/White/Hallway	White Non-Fibrous Homogeneous		100% Non-fibrous (Other)	None Detected
49 392111563-0049	Floor Tile 12x12/White/Room-2	White Non-Fibrous Homogeneous		100% Non-fibrous (Other)	None Detected
50 392111563-0050	Floor Tile Mastic/Black/Lobby	Black Non-Fibrous Homogeneous		92% Non-fibrous (Other)	8% Chrysotile
51 392111563-0051	Floor Tile Mastic/Black/Hallway	Black Non-Fibrous Homogeneous		91% Non-fibrous (Other)	9% Chrysotile
52 392111563-0052	Floor Tile Mastic/Black/Room-2	Tan Non-Fibrous Homogeneous		100% Non-fibrous (Other)	None Detected

Initial report from: 11/16/2021 17:39:59



**H.M. PITT LABS, INC.**  
9590 Chesapeake Drive, Suite 5  
San Diego, CA 92123  
(619)474-8548 Fax: (858)412-3305

# Asbestos Survey Chain of Custody

WO#: 21856

Lab ID#:

CUSTOMER INFORMATION			PROJECT INFORMATION			ANALYSIS REQUESTED									
Bill To: City of Chula Vista- Stephen N Mosca			Sampled By: Richard Meyers			* Condition		** Potential		ACM Type			Physical Assessment		
Address: 1800 Maxwell Rd.			Location: 50 N 4st			Good <5%		For Damage		Non-Friable			Gravimetric 1,000 pt ct		
Chula Vista CA. 91911			Chula Vista CA.			Damaged <25%		Occupancy/Traffic		Friable			PLM Analysis		
Phone: 619-6397-6149			PO#:			Significant Damage >25%		Erosion		Other:			Photos		
Fax:			Job/Claim #:												
Sample #	Code	Color & Location	***Approx Sq Feet	* Condition		** Potential		ACM Type			Physical Assessment				
11	50	White Hallway	180	Good <5%											
12	60	Lobby	300	Good <5%											
13															
14		Hallway													
15	270	GRAY LOBBY Hockey Puck													
16															
17		Hallway													
18	340	White Room 5	800												
19															
20															

Relinquished by: \_\_\_\_\_ Date/Time: 11-8-21

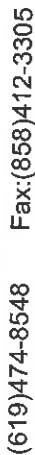
Received by: \_\_\_\_\_ Date/Time: \_\_\_\_\_

Standard Rush: ☐ 24 hours

End of Day Rush: ☐

Turnaround Time: Regular: ☒ 3 to 5 days

- \*\*\* Amount of Homogeneous Material
- Physical Assessment**
- # 1 Damaged or significantly damaged TSI.
- # 2 Damaged friable surfacing ACM.
- # 3 Significantly damaged friable surfacing ACM.
- # 4 Damaged or significantly damaged friable misc ACM.
- # 5 ACM with potential for significant damage.
- # 6 ACM with potential for damage.
- # 7 Any remaining friable ACM or friable suspect ACM.
- |                           |                        |                             |                        |                         |
|---------------------------|------------------------|-----------------------------|------------------------|-------------------------|
| 10 - Caulking             | 90 - Dirt/Soil         | 180 - Floor Tile 12x12      | 270 - Mastics & Glues  | 370 - Transite Siding   |
| 20 - Aircell              | 100 - Drywall          | 190 - Floor Tile 9x9        | 280 - Parquet Mastic   | 380 - Vinyl Flooring    |
| 30 - Block TSI            | 110 - Joint Compd.     | 200 - Tile Mastic           | 290 - Pipe Insulation  | 390 - Window Putty      |
| 35 - Blown in Insulation  | 120 - Duct Overspray   | 210 - Gasline Wrap          | 300 - Rolled Roofing   | 400 - Plaster/Drywall   |
| 40 - Carpet Glue          | 130 - Elbow TSI        | 220 - Gasket Materials      | 310 - Roof Penetration | 410 - Wood Putty        |
| 50 - Ceiling Tile 2x4     | 140 - Expansion Joint  | 230 - Grout                 | 320 - Roofing Paper    | 420 - Vapor Barrier     |
| 60 - Ceiling Tile 12x12   | 150 - Exterior Stucco  | 240 - HVAC Wrap             | 330 - Roofing Shingles | 430 - 2x2 Ceiling Tile  |
| 70 - Composite Drywall/JC | 160 - Exterior Texture | 250 - Interior Wall Plaster | 340 - SOAC             | 440 - 2x1 Ceiling Tile  |
| 80 - Cove Base Mastic     | 170 - Fireproofing     | 260 - Interior Wall Texture | 350 - Thin Set         | 450 - Concrete Wall     |
|                           |                        |                             | 360 - Transite Pipe    | 460 - Cement Block Wall |



**Lab ID#:**

		*** Amount of Homogeneous Material
180 - Floor Tile 12x12	370 - Transite Siding	<b><u>Physical Assessment</u></b> # 1 Damaged or significantly damaged TSI. # 2 Damaged friable surfacing ACM. # 3 Significantly damaged friable surfacing ACM. # 4 Damaged or significantly damaged friable misc ACM. # 5 ACBM with potential for significant damage. # 6 ACBM with potential for damage. # 7 Any remaining friable ACBM or friable suspect ACBM.
190 - Floor Tile 9x9	270 - Mastics & Glues	
200 - Tile Mastic	280 - Parquet Mastic	
210 - Gasline Wrap	290 - Pipe Insulation	
220 - Gasket Materials	300 - Rolled Roofing	
230 - Grout	310 - Roof Penetration	
240 - HVAC Wrap	320 - Roofing Paper	
250 - Interior Wall Plaster	330 - Roofing Shingles	
260 - Interior Wall Texture	340 - SOAC	
	350 - Thin Set	
90 - Dirt/Soil	360 - Transite Pipe	
100 - Drywall	460 - Cement Block Wall	
110 - Joint Cmpd.		
120 - Duct Overspray		
130 - Elbow TSI		
140 - Expansion Joint		
150 - Exterior Stucco		
160 - Exterior Texture		
170 - Fireproofing		
20 - Aircell		
30 - Block TSI		
35 - Blown in Insulation		
40 - Carpet Glue		
50 - Ceiling Tile 2x4		
60 - Ceiling Tile 12x12		
70 - Composite Drywall/JC		
80 - Cove Base Mastic		









# H.M. PITT LABS, INC.

9590 Chesapeake Drive, Suite 5  
San Diego, CA 92123

(619) 474-8548 Fax: (858) 412-3305

## Asbestos Survey Chain of Custody

WO#: 21856

Lab ID#:

### CUSTOMER INFORMATION

Bill To: City of Chula Vista- Stephen N Mosca

Address: 1800 Maxwell Rd.

Chula Vista CA. 91911

Phone: 619-6397-6149

Fax:

### PROJECT INFORMATION

Sampled By: Richard Meyers

Location: 50 N 4st

Chula Vista CA.

PO#:

Job/Claim #:

Date: 11-8-21

### ANALYSIS REQUESTED

#### \*\* Potential

For Damage

Occupancy/Traffic

Erosion

Vibration

Other:

#### \* Condition

Good <5%

Damaged <25%

Significant Damage >25%

#### ACM Type

Friable

Non-Friable

Surfacing Material

TSI

Misc

Physical Assessment

Gravimetric 1,000 pt ct

PLM Analysis

Photos

#### Color & Location

\*\*\* Approx Sq Feet

Sample #	Code	Color & Location	*** Approx Sq Feet	Condition	Potential	ACM Type	Physical Assessment	Gravimetric 1,000 pt ct	PLM Analysis	Photos
51	200	Black	850	*					X	X
52	180	Red	1200						X	X
53	180	Red	1200						X	X
54	180	Red	1200						X	X
55	180	Red	1200						X	X
56	200	Black	1200						X	X
57	180	Red	1200						X	X
58	180	Red	1200						X	X
59	180	Red	1200						X	X
60	180	Red	1200						X	X

Relinquished by: B. Rogers

Date/Time: 11-8-21

Received by:

Date/Time:

Received by:

Date/Time:

Turnaround Time:

Regular: ☐ 3 to 5 days

Standard Rush: ☐ 24 hours

End of Day Rush: ☐

\*\*\* Amount of Homogeneous Material

Physical Assessment

# 1 Damaged or significantly damaged TSI.

# 2 Damaged friable surfacing ACM.

# 3 Significantly damaged friable surfacing ACM.

# 4 Damaged or significantly damaged friable misc ACM.

# 5 ACM with potential for significant damage.

# 6 ACM with potential for damage.

# 7 Any remaining friable ACM or friable suspect ACM.

10 - Caulking	90 - Dirt/Soil	180 - Floor Tile 12x12	270 - Mastics & Glues	370 - Transite Siding
20 - Aircell	100 - Drywall	190 - Floor Tile 9x9	280 - Parquet Mastic	380 - Vinyl Flooring
30 - Block TSI	110 - Joint Compd.	200 - Tile Mastic	290 - Pipe Insulation	390 - Window Putty
35 - Blown in Insulation	120 - Duct Overspray	210 - Gasline Wrap	300 - Rolled Roofing	400 - Plaster/Drywall
40 - Carpet Glue	130 - Elbow TSI	220 - Gasket Materials	310 - Roof Penetration	410 - Wood Putty
50 - Ceiling Tile 2x4	140 - Expansion Joint	230 - Grout	320 - Roofing Paper	420 - Vapor Barrier
60 - Ceiling Tile 12x12	150 - Exterior Stucco	240 - HVAC Wrap	330 - Roofing Shingles	430 - 2x2 Ceiling Tile
70 - Composite Drywall/JC	160 - Exterior Texture	250 - Interior Wall Plaster	340 - SOAC	440 - 2x1 Ceiling Tile
80 - Cove Base Mastic	170 - Fireproofing	260 - Interior Wall Texture	350 - Thin Set	450 - Concrete Wall
			360 - Transite Pipe	460 - Cement Block Wall



## **Appendix VI**

### **Lead Results**



# H.M. Pitt Labs, Inc.

9590 Chesapeake Dr · Ste 5 · San Diego, CA 92123

# Lab Number: 178644-253986

Tel: 619-474-8548 · Fax: 858-412-3305

**Company:**

City of Chula Vista - Stephen N Mosca  
1800 Maxwell Road  
Chula Vista, CA 91911

**Date Entered:** 11/09/2021

**Analyzed By:** Rafael Aguilera

**Customer PO / Claim#:** 2221479

**Contract Number:**

**Job Site:** 50 North 4th St. Chula Vista, CA 91910

**Date Sampled**

**Who Sampled**

11/08/2021

Richard Meyers

**Lab Notes:**

## GENERAL ANALYSIS

**Analysis Number:** 178644-1

**Date Received:** 11/9/2021

**Customer Number:** 01

**Location:** Interior Wall White Paint in Lobby

**Analysis:** TTLC - Lead (EPA 3050-M, 7420-M)

**Results:** 94.7 mg/kg

**Comments:** Reporting Limit = 50.0 mg/kg

**Analysis Number:** 178644-2

**Date Received:** 11/9/2021

**Customer Number:** 02

**Location:** Interior Wall Dark Blue Paint in Lobby

**Analysis:** TTLC - Lead (EPA 3050-M, 7420-M)

**Results:** 59.5 mg/kg

**Comments:** Reporting Limit = 50.0 mg/kg

-Unless otherwise specified, the samples were received in an acceptable condition and met all holding time and preservation - handling requirements. The laboratory does not correct for field or matrix blanks.

-This report shall not be reproduced, except in full, without the written approval of H.M. PITT LABS, INC. No use of this report for promotional or advertising purposes is permitted without the written approval of H.M. PITT LABS, INC.

-All samples tested as submitted to the lab. Information supplied by the customer can affect the validity of results. H.M. PITT LABS, INC. does not assume responsibility for the accuracy of the information submitted with the samples unless collected by H.M. PITT LABS, INC.

-All analytical batch data met quality control criteria unless otherwise noted.

-H.M. Pitt Labs, Inc. is an EPA-recognized NLLAP Laboratory accredited through AIHA-LAP, LLC ELLAP (Lab ID # 101678).

**APPROVED BY:**

**Dated:** 11/13/2021

LELAND S. PITT, CIH

Page 1 of 7

Reviewed by:  
Ellen Atienza  
Analyst  
11/20/2021



## H.M. Pitt Labs, Inc.

9590 Chesapeake Dr · Ste 5 · San Diego, CA 92123

## Lab Number: 178644-253986

Tel: 619-474-8548 · Fax: 858-412-3305

**Company:**

City of Chula Vista - Stephen N Mosca  
1800 Maxwell Road  
Chula Vista, CA 91911

**Date Entered:** 11/09/2021

**Analyzed By:** Rafael Aguilera

**Customer PO / Claim#:** 2221479

**Contract Number:**

**Job Site:** 50 North 4th St. Chula Vista, CA 91910

**Date Sampled** **Who Sampled**

11/08/2021 Richard Meyers

**Lab Notes:**

---

### GENERAL ANALYSIS

---

**Analysis Number:** 178644-3

**Date Received:** 11/9/2021

**Customer Number:** 03

**Location:** Interior Wall Brown Paint in Room-2

**Analysis:** TTLC - Lead (EPA 3050-M, 7420-M)

**Results:** **<50.0 mg/kg**

**Comments:** Reporting Limit = 50.0 mg/kg

---

**Analysis Number:** 178644-4

**Date Received:** 11/9/2021

**Customer Number:** 04

**Location:** Interior Wall Light Blue Paint in Room-1

**Analysis:** TTLC - Lead (EPA 3050-M, 7420-M)

**Results:** **<50.0 mg/kg**

**Comments:** Reporting Limit = 50.0 mg/kg

---

-Unless otherwise specified, the samples were received in an acceptable condition and met all holding time and preservation - handling requirements. The laboratory does not correct for field or matrix blanks.

-This report shall not be reproduced, except in full, without the written approval of H.M. PITT LABS, INC. No use of this report for promotional or advertising purposes is permitted without the written approval of H.M. PITT LABS, INC.

-All samples tested as submitted to the lab. Information supplied by the customer can affect the validity of results. H.M. PITT LABS, INC. does not assume responsibility for the accuracy of the information submitted with the samples unless collected by H.M. PITT LABS, INC.

-All analytical batch data met quality control criteria unless otherwise noted.

-H.M. Pitt Labs, Inc. is an EPA-recognized NLLAP Laboratory accredited through AIHA-LAP, LLC ELLAP (Lab ID # 101678).

**APPROVED BY:**

**Dated:** 11/18/2021

LELAND S. PITT, CIH

Page 2 of 7

Reviewed by:  
Ellen Atienza  
Analyst  
11/20/2021

**H.M. Pitt Labs, Inc.**

9590 Chesapeake Dr · Ste 5 · San Diego, CA 92123

**Lab Number: 178644-253986**

Tel: 619-474-8548 · Fax: 858-412-3305

**Company:**City of Chula Vista - Stephen N Mosca  
1800 Maxwell Road  
Chula Vista, CA 91911**Date Entered:** 11/09/2021**Analyzed By:** Rafael Aguilera**Customer PO / Claim#:** 2221479**Contract Number:****Job Site:** 50 North 4th St. Chula Vista, CA 91910**Date Sampled** **Who Sampled**

11/08/2021

Richard Meyers

**Lab Notes:**

---

**GENERAL ANALYSIS**

---

**Analysis Number:** 178644-5**Date Received:** 11/9/2021**Customer Number:** 05**Location:** Interior Wall Beige Paint in Room-2**Analysis:** TTLC - Lead (EPA 3050-M, 7420-M)**Results:** <50.0 mg/kg**Comments:** Reporting Limit = 50.0 mg/kg**Analysis Number:** 178644-6**Date Received:** 11/9/2021**Customer Number:** 06**Location:** Interior Wall Yellow Paint in Room 6**Analysis:** TTLC - Lead (EPA 3050-M, 7420-M)**Results:** 83.0 mg/kg**Comments:** Reporting Limit = 50.0 mg/kg

---

-Unless otherwise specified, the samples were received in an acceptable condition and met all holding time and preservation - handling requirements. The laboratory does not correct for field or matrix blanks.

-This report shall not be reproduced, except in full, without the written approval of H.M. PITT LABS, INC. No use of this report for promotional or advertising purposes is permitted without the written approval of H.M. PITT LABS, INC.

-All samples tested as submitted to the lab. Information supplied by the customer can affect the validity of results. H.M. PITT LABS, INC. does not assume responsibility for the accuracy of the information submitted with the samples unless collected by H.M. PITT LABS, INC.

-All analytical batch data met quality control criteria unless otherwise noted.

-H.M. Pitt Labs, Inc. is an EPA-recognized NLLAP Laboratory accredited through AIHA-LAP, LLC ELLAP (Lab ID # 101678).

**APPROVED BY:****Dated:** 11/18/2021

LELAND S. PITT, CIH

Page 3 of 7

Reviewed by:  
Ellen Atienza  
Analyst  
11/20/2021



# H.M. Pitt Labs, Inc.

9590 Chesapeake Dr · Ste 5 · San Diego, CA 92123

# Lab Number: 178644-253986

Tel: 619-474-8548 · Fax: 858-412-3305

## Company:

City of Chula Vista - Stephen N Mosca  
1800 Maxwell Road  
Chula Vista, CA 91911

**Date Entered:** 11/09/2021

**Analyzed By:** Rafael Aguilera

**Customer PO / Claim#:** 2221479

**Contract Number:**

**Job Site:** 50 North 4th St. Chula Vista, CA 91910

**Date Sampled**

**Who Sampled**

11/08/2021

Richard Meyers

## Lab Notes:

## GENERAL ANALYSIS

**Analysis Number:** 178644-7

**Date Received:** 11/9/2021

**Customer Number:** 07

**Location:** Interior Door White Paint in Lobby

**Analysis:** TTLC - Lead (EPA 3050-M, 7420-M)

**Results:** < 50.0 mg/kg

**Comments:** Reporting Limit = 50.0 mg/kg

**Analysis Number:** 178644-8

**Date Received:** 11/9/2021

**Customer Number:** 08

**Location:** Interior Door White Paint in Lobby

**Analysis:** TTLC - Lead (EPA 3050-M, 7420-M)

**Results:** 134 mg/kg

**Comments:** Reporting Limit = 50.0 mg/kg

-Unless otherwise specified, the samples were received in an acceptable condition and met all holding time and preservation - handling requirements. The laboratory does not correct for field or matrix blanks.

-This report shall not be reproduced, except in full, without the written approval of H.M. PITT LABS, INC. No use of this report for promotional or advertising purposes is permitted without the written approval of H.M. PITT LABS, INC.

-All samples tested as submitted to the lab. Information supplied by the customer can affect the validity of results. H.M. PITT LABS, INC. does not assume responsibility for the accuracy of the information submitted with the samples unless collected by H.M. PITT LABS, INC.

-All analytical batch data met quality control criteria unless otherwise noted.

-H.M. Pitt Labs, Inc. is an EPA-recognized NLLAP Laboratory accredited through AIHA-LAP, LLC ELLAP (Lab ID # 101678).

**APPROVED BY:**

**Dated:** 11/18/2021

LELAND S. PITT, CIH

Page 4 of 7

Reviewed by:  
Ellen Atienza  
Analyst  
11/20/2021



# H.M. Pitt Labs, Inc.

9590 Chesapeake Dr · Ste 5 · San Diego, CA 92123

# Lab Number: 178644-253986

Tel: 619-474-8548 · Fax: 858-412-3305

**Company:**

City of Chula Vista - Stephen N Mosca  
1800 Maxwell Road  
Chula Vista, CA 91911

**Date Entered:** 11/09/2021

**Analyzed By:** Rafael Aguilera

**Customer PO / Claim#:** 2221479

**Contract Number:**

**Job Site:** 50 North 4th St. Chula Vista, CA 91910

**Date Sampled** **Who Sampled**

11/08/2021 Richard Meyers

**Lab Notes:**

## GENERAL ANALYSIS

**Analysis Number:** 178644-9

**Date Received:** 11/9/2021

**Customer Number:** 09

**Location:** Interior Window Frame White Paint in Lobby

**Analysis:** TTLC - Lead (EPA 3050-M, 7420-M)

**Results:** **2,870 mg/kg**

**Comments:** Reporting Limit = 287 mg/kg (Elevated Reporting Limit Due to Sample Dilution)

**Analysis Number:** 178644-10

**Date Received:** 11/9/2021

**Customer Number:** 10

**Location:** Exterior Window Frame White Paint

**Analysis:** TTLC - Lead (EPA 3050-M, 7420-M)

**Results:** **10,000 mg/kg**

**Comments:** Reporting Limit = 661 mg/kg (Elevated Reporting Limit Due to Sample Dilution)

-Unless otherwise specified, the samples were received in an acceptable condition and met all holding time and preservation - handling requirements. The laboratory does not correct for field or matrix blanks.

-This report shall not be reproduced, except in full, without the written approval of H.M. PITT LABS, INC. No use of this report for promotional or advertising purposes is permitted without the written approval of H.M. PITT LABS, INC.

-All samples tested as submitted to the lab. Information supplied by the customer can affect the validity of results. H.M. PITT LABS, INC. does not assume responsibility for the accuracy of the information submitted with the samples unless collected by H.M. PITT LABS, INC.

-All analytical batch data met quality control criteria unless otherwise noted.

-H.M. Pitt Labs, Inc. is an EPA-recognized NLLAP Laboratory accredited through AIHA-LAP, LLC ELLAP (Lab ID # 101678).

**APPROVED BY:**

**Dated:** 11/18/2021

LELAND S. PITT, CIH

Page 5 of 7

Reviewed by:  
Ellen Atienza  
Analyst  
11/20/2021





# H.M. Pitt Labs, Inc.

9590 Chesapeake Dr · Ste 5 · San Diego, CA 92123

# Lab Number: 178644-253986

Tel: 619-474-8548 · Fax: 858-412-3305

**Company:**

City of Chula Vista - Stephen N Mosca  
1800 Maxwell Road  
Chula Vista, CA 91911

**Date Entered:** 11/09/2021

**Analyzed By:** Rafael Aguilera

**Customer PO / Claim#:** 2221479

**Contract Number:**

**Job Site:** 50 North 4th St. Chula Vista, CA 91910

**Date Sampled** **Who Sampled**

11/08/2021 Richard Meyers

**Lab Notes:**

## GENERAL ANALYSIS

**Analysis Number:** 178644-11

**Date Received:** 11/9/2021

**Customer Number:** 11

**Location:** Exterior Wall White Paint on Stucco Wall

**Analysis:** TTLC - Lead (EPA 3050-M, 7420-M)

**Results:** **1,950 mg/kg**

**Comments:** Reporting Limit = 201 mg/kg (Elevated Reporting Limit Due to Sample Dilution)

**Analysis Number:** 178644-12

**Date Received:** 11/9/2021

**Customer Number:** 12

**Location:** Exterior Wall White Paint on Block Wall

**Analysis:** TTLC - Lead (EPA 3050-M, 7420-M)

**Results:** **< 50.0 mg/kg**

**Comments:** Reporting Limit = 50.0 mg/kg

-Unless otherwise specified, the samples were received in an acceptable condition and met all holding time and preservation - handling requirements. The laboratory does not correct for field or matrix blanks.

-This report shall not be reproduced, except in full, without the written approval of H.M. PITT LABS, INC. No use of this report for promotional or advertising purposes is permitted without the written approval of H.M. PITT LABS, INC.

-All samples tested as submitted to the lab. Information supplied by the customer can affect the validity of results. H.M. PITT LABS, INC. does not assume responsibility for the accuracy of the information submitted with the samples unless collected by H.M. PITT LABS, INC.

-All analytical batch data met quality control criteria unless otherwise noted.

-H.M. Pitt Labs, Inc. is an EPA-recognized NLLAP Laboratory accredited through AIHA-LAP, LLC ELLAP (Lab ID # 101678).

**APPROVED BY:**

**Dated:** 11/18/2021

LELAND S. PITT, CIH

Page 6 of 7

Reviewed by:  
Ellen Atienza  
Analyst  
11/20/2021



# H.M. Pitt Labs, Inc.

9590 Chesapeake Dr · Ste 5 · San Diego, CA 92123

# Lab Number: 178644-253986

Tel: 619-474-8548 · Fax: 858-412-3305

## Company:

City of Chula Vista - Stephen N Mosca  
1800 Maxwell Road  
Chula Vista, CA 91911

**Date Entered:** 11/09/2021

**Analyzed By:** Rafael Aguilera

**Customer PO / Claim#:** 2221479

**Contract Number:**

**Job Site:** 50 North 4th St. Chula Vista, CA 91910

**Date Sampled**

**Who Sampled**

11/08/2021

Richard Meyers

## Lab Notes:

## GENERAL ANALYSIS

**Analysis Number:** 178644-13

**Date Received:** 11/9/2021

**Customer Number:** 13

**Location:** Exterior Wall White Paint on Wood Siding

**Analysis:** TTLC - Lead (EPA 3050-M, 7420-M)

**Results:** 76.2 mg/kg

**Comments:** Reporting Limit = 50.0 mg/kg

**Analysis Number:** 178644-14

**Date Received:** 11/9/2021

**Customer Number:** 14

**Location:** Exterior Wall White Paint on Roof Stucco Wall

**Analysis:** TTLC - Lead (EPA 3050-M, 7420-M)

**Results:** 2,450 mg/kg

**Comments:** Reporting Limit = 261 mg/kg (Elevated Reporting Limit Due to Sample Dilution)

-Unless otherwise specified, the samples were received in an acceptable condition and met all holding time and preservation - handling requirements. The laboratory does not correct for field or matrix blanks.

-This report shall not be reproduced, except in full, without the written approval of H.M. PITT LABS, INC. No use of this report for promotional or advertising purposes is permitted without the written approval of H.M. PITT LABS, INC.

-All samples tested as submitted to the lab. Information supplied by the customer can affect the validity of results. H.M. PITT LABS, INC. does not assume responsibility for the accuracy of the information submitted with the samples unless collected by H.M. PITT LABS, INC.

-All analytical batch data met quality control criteria unless otherwise noted.

-H.M. Pitt Labs, Inc. is an EPA-recognized NLLAP Laboratory accredited through AIHA-LAP, LLC ELLAP (Lab ID # 101678).

**APPROVED BY:**

*Leland S. Pitt*

**Dated:** 11/13/2021

LELAND S. PITT, CIH

Page 7 of 7

Reviewed by:

Ellen Atienza

Analyst

11/20/2021



**H.M. PITT LABS, INC.**  
9590 Chesapeake Dr. Suite 5  
San Diego, CA 92123  
(619)474-8548 Fax:(619)474-6128

# Metals Chain of Custody Record

Page \_\_\_\_\_ of \_\_\_\_\_

WO #:	21856
Lab #:	

CUSTOMER INFORMATION		PROJECT INFORMATION		ANALYSIS REQUESTED					
Bill To:	City of Chula Vista- Stephen N Mosca	Sampled By:	Richard Meyers	Date:	11-8-21	Condition	Amount	Metals	Other
Address:	1800/ Maxwell Rd.	Location:	50 N. 4st.						
	Chula Vista CA. 91911		Chula Vista CA.						
Fax:	619-397-6149	PO #:							
		Job/Claim #:							
Sample #	SAMPLE DESCRIPTION	Color							
1	Pointchil Interior wall Lobby	White							
2		Dark Blue							
3		Room 1-2							
4		Light Blue							
5		Dark Blue							
6		Yellow							
7		Door							
8		Window							
9		Frame							
10		Exterior							
Relinquished by:	<i>BS</i>	Received by:							
Date/Time:	11-8-21	Date/Time:							
Relinquished by:		Received by:							
Date/Time:		Date/Time:							

☐ RUSH\* - End of Day

☐ 2 Day

☐ 3 Day

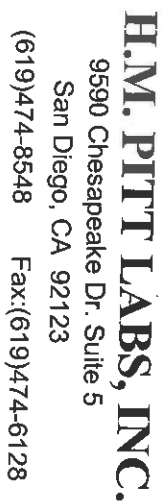
☐ 4 Day

☐ 5 Day

Other \_\_\_\_\_

**REQUIRED TURNAROUND**

\* Rush may require an extra charge



# Metals Chain of Custody Record

Page \_\_\_\_\_ of \_\_\_\_\_

WO #:	21856
Lab #:	

[illegible]

\* Rush may require an extra charge